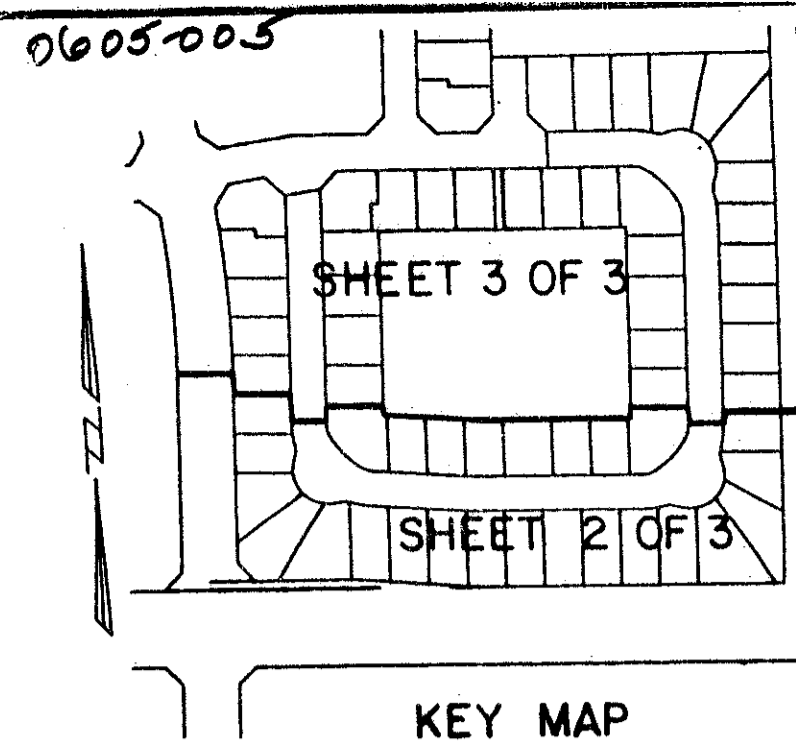


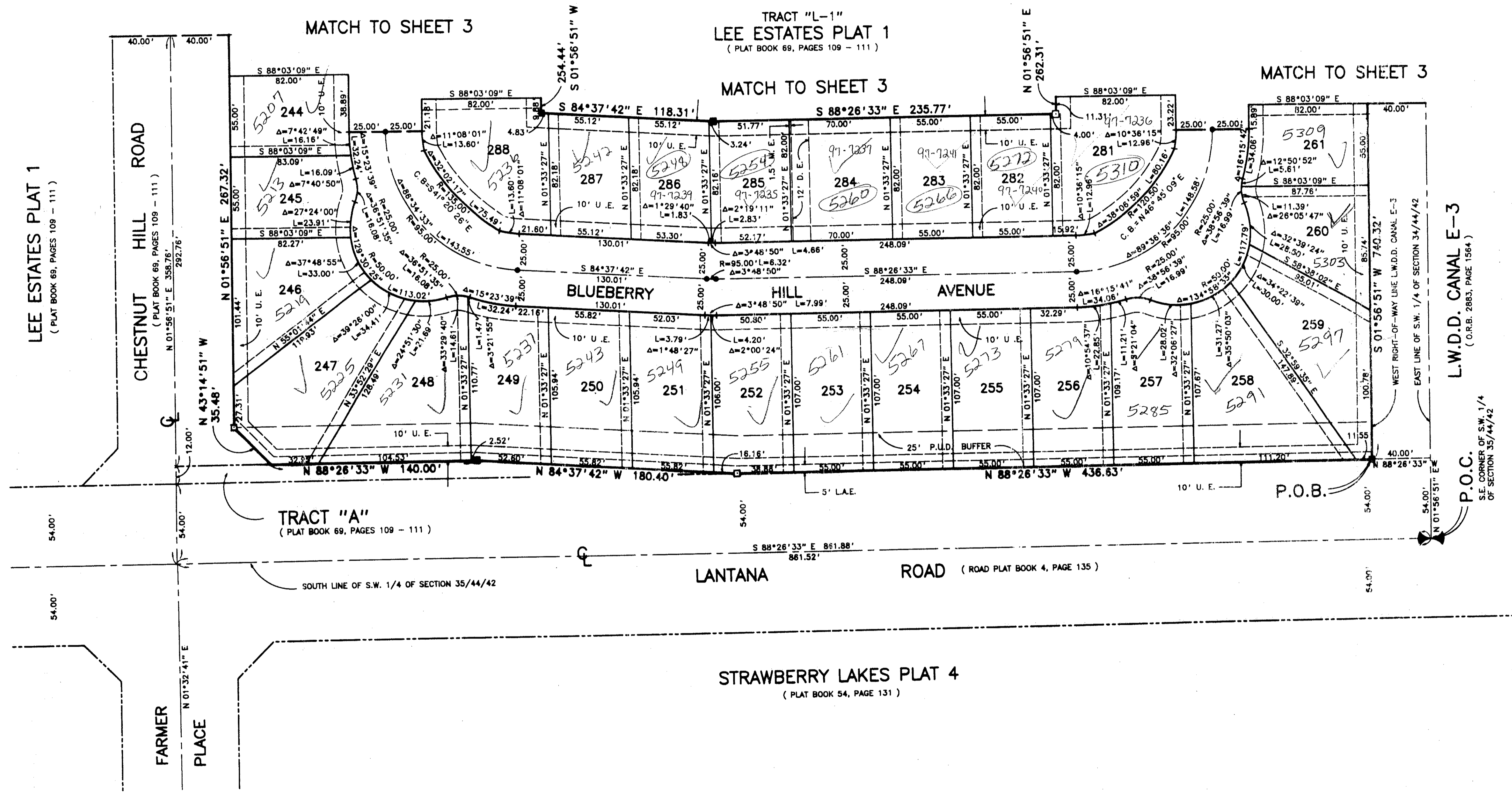
# LEE ESTATES PLAT V

A PLANNED UNIT DEVELOPMENT  
LYING IN SECTION 35, TOWNSHIP 44 SOUTH, RANGE 42 EAST,  
PALM BEACH COUNTY, FLORIDA

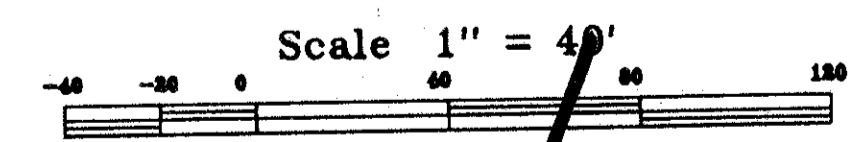
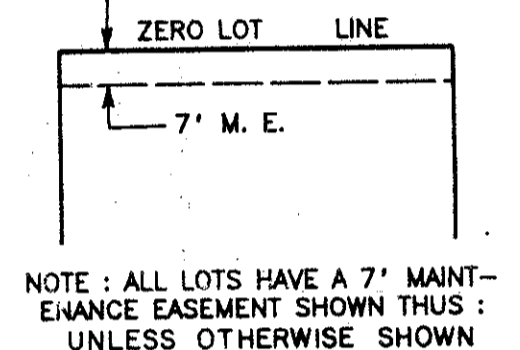
SHEET 2 OF 3                      JUNE , 1994



STATE OF FLORIDA                      ss  
COUNTY OF PALM BEACH                      ss  
This Plat was filed for record at \_\_\_\_\_  
M. this \_\_\_\_\_ day of \_\_\_\_\_ 19\_\_\_\_  
and duly recorded in Plat Book No. \_\_\_\_\_  
on Page \_\_\_\_\_  
Dorothy H. Wilton, Clerk of the Circuit Court  
By \_\_\_\_\_ D.C.

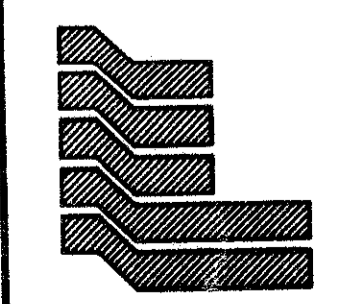


PET. 90-16  
5/2/2/I



73/60

0605-005



Landmark Surveying & Mapping Inc.

1850 FOREST HILL BOULEVARD  
PH. (407)433-5405                      SUITE 100                      W.P.B. FLORIDA

LEE ESTATES PLAT V

SUBDIVISION OF LEE ESTATES PLAT V  
BOOK 60                      PAGE 175B  
PAGE COVER                      RS  
PAGE 33                      RS  
SE 2-157B                      ZIP CODE 33463  
FOR BASE                      TAZ-349  
35